



Rawa'a AlThuriya

  +966 56 642 8459

 info@rth.sa

 www.rth.sa



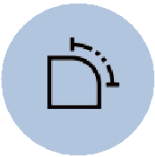
Stainless Steel Sink Details

AT350 Commercial Series



Handmade for the Best quality

Modern and luxurious Atisan Kitchen sink are handmade over 80% using cutting-edge technology. It also handles only the best products with a thorough quality inspection system.



10R for cleanliness

All corners are handled smoothly with 10R, making it convenient to clean and manage.



Engineeringly designed drainage system

It is designed at the optimal floorangle so that the tableware inside the sink does not fall. It is also designed to facilitate drainage by placing a gentle slope and drainage line on the floor to prevent water from accumulating.



Minimize noise for a quiet kitchen

A pad that blocks vibration, and soundproof pads absorb noise and vibration from all sides. In addition, the double pad prevents condensation from occurring.



Special packaging lowers the risk of damage

Double wrapping the product with sink floor protective materials and vinyl and black cloth, minimizing the risk of damage that may occur during delivery with a stroke corner cap and a thick protective cover.



STS304 for premium sinks

It uses the finest stainless steel and has excellent corrosion resistance. The surface is treated with a hairline to provide

elegant beauty.



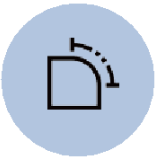
Product Name		AT350
Size	Outer	350 x 450 x 227 (mm)
	Inner	300 x 400 (mm)
Corner Radius		10 R
Drain Size		89 Ø
Installation Type		Under Mount
Thickness	Plate	1.15 T
	Sink	1.15 T
Finish		Hair Line
Accessories		Cover for small drain, Small drain

EV457 Commercial Series



Handmade for the Best quality

Modern and luxurious Atisan Kitchen sink are handmade over 80% using cutting-edge technology. It also handles only the best products with a thorough quality inspection system.



10R for cleanliness

All corners are handled smoothly with 10R, making it convenient to clean and manage.



Engineeringly designed drainage system

It is designed at the optimal floorangle so that the tableware inside the sink does not fall. It is also designed to facilitate drainage by placing a gentle slope and drainage line on the floor to prevent water from accumulating.



Minimize noise for a quiet kitchen

A pad that blocks vibration, and soundproof pads absorb noise and vibration from all sides. In addition, the double pad prevents condensation from occurring.



Special packaging lowers the risk of damage

Double wrapping the product with sink floor protective materials and vinyl and black cloth, minimizing the risk of damage that may occur during delivery with a stroke corner cap and a thick protective cover.



STS304 for premium sinks

It uses the finest stainless steel and has excellent corrosion resistance. The surface is treated with a hairline to provide

elegant beauty.



Product Name		EV457
Size	Outer	457 x 381 x 227 (mm)
	Inner	407 x 331 (mm)
Corner Radius		10 R
Drain Size		89 Ø
Installation Type		Under Mount
Thickness	Plate	2 T
	Sink	0.96 T
Finish		Hair Line
Accessories		Cover for small drain, Small drain

SU500 Commercial Series



Handmade for the Best quality

Modern and luxurious Atisan Kitchen sink are handmade over 80% using cutting-edge technology. It also handles only the best products with a thorough quality inspection system.



10R for cleanliness

All corners are handled smoothly with 10R, making it convenient to clean and manage.



Engineeringly designed drainage system

It is designed at the optimal floorangle so that the tableware inside the sink does not fall. It is also designed to facilitate drainage by placing a gentle slope and drainage line on the floor to prevent water from accumulating.



Minimize noise for a quiet kitchen

A pad that blocks vibration, and soundproof pads absorb noise and vibration from all sides. In addition, the double pad prevents condensation from occurring.



Special packaging lowers the risk of damage

Double wrapping the product with sink floor protective materials and vinyl and black cloth, minimizing the risk of damage that may occur during delivery with a stroke corner cap and a thick protective cover.



STS304 for premium sinks

It uses the finest stainless steel and has excellent corrosion resistance. The surface is treated with a hairline to provide

elegant beauty.



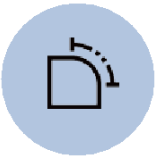
Product Name		SU500
Size	Outer	550 x 450 x 227 (mm)
	Inner	500 x 400 (mm)
Corner Radius		10 R
Drain Size		89 Ø
Installation Type		Under Mount
Thickness	Plate	1.15 T
	Sink	1.15 T
Finish		Hair Line
Accessories		Colander, Rolling Rack, Small drain, Cover for Small drain

AT550 Commercial Series



Handmade for the Best quality

Modern and luxurious Atisan Kitchen sink are handmade over 80% using cutting-edge technology. It also handles only the best products with a thorough quality inspection system.



10R for cleanliness

All corners are handled smoothly with 10R, making it convenient to clean and manage.



Engineeringly designed drainage system

It is designed at the optimal floorangle so that the tableware inside the sink does not fall. It is also designed to facilitate drainage by placing a gentle slope and drainage line on the floor to prevent water from accumulating.



Minimize noise for a quiet kitchen

A pad that blocks vibration, and soundproof pads absorb noise and vibration from all sides. In addition, the double pad prevents condensation from occurring.



Special packaging lowers the risk of damage

Double wrapping the product with sink floor protective materials and vinyl and black cloth, minimizing the risk of damage that may occur during delivery with a stroke corner cap and a thick protective cover.



STS304 for premium sinks

It uses the finest stainless steel and has excellent corrosion resistance. The surface is treated with a hairline to provide

elegant beauty.



Product Name		AT550
Size	Outer	550 x 450 x 227 (mm)
	Inner	500 x 400 (mm)
Corner Radius		10 R
Drain Size		89 Ø
Installation Type		Under Mount
Thickness	Plate	1.15 T
	Sink	1.15 T
Finish		Hair Line
Accessories		Colander, Rolling Rack, Small drain, Cover for Small drain

AT650 Commercial Series



Handmade for the Best quality

Modern and luxurious Atisan Kitchen sink are handmade over 80% using cutting-edge technology. It also handles only the best products with a thorough quality inspection system.



10R for cleanliness

All corners are handled smoothly with 10R, making it convenient to clean and manage.



Engineeringly designed drainage system

It is designed at the optimal floorangle so that the tableware inside the sink does not fall. It is also designed to facilitate drainage by placing a gentle slope and drainage line on the floor to prevent water from accumulating.



Minimize noise for a quiet kitchen

A pad that blocks vibration, and soundproof pads absorb noise and vibration from all sides. In addition, the double pad prevents condensation from occurring.



Special packaging lowers the risk of damage

Double wrapping the product with sink floor protective materials and vinyl and black cloth, minimizing the risk of damage that may occur during delivery with a stroke corner cap and a thick protective cover.



STS304 for premium sinks

It uses the finest stainless steel and has excellent corrosion resistance. The surface is treated with a hairline to provide

elegant beauty.



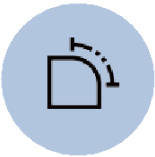
Product Name		AT650
Size	Outer	650 x 450 x 227 (mm)
	Inner	600 x 400 (mm)
Corner Radius		10 R
Drain Size		89 Ø
Installation Type		Under Mount
Thickness	Plate	1.15 T
	Sink	1.15 T
Finish		Hair Line
Accessories		Wire Basket, Cutting Board, Colander, Rolling Rack, Small drain, Cover for Small drain

AT830 Commercial Series



Handmade for the Best quality

Modern and luxurious Atisan Kitchen sink are handmade over 80% using cutting-edge technology. It also handles only the best products with a thorough quality inspection system.



10R for cleanliness

All corners are handled smoothly with 10R, making it convenient to clean and manage.



Engineeringly designed drainage system

It is designed at the optimal floorangle so that the tableware inside the sink does not fall. It is also designed to facilitate drainage by placing a gentle slope and drainage line on the floor to prevent water from accumulating.



Minimize noise for a quiet kitchen

A pad that blocks vibration, and soundproof pads absorb noise and vibration from all sides. In addition, the double pad prevents condensation from occurring.



Special packaging lowers the risk of damage

Double wrapping the product with sink floor protective materials and vinyl and black cloth, minimizing the risk of damage that may occur during delivery with a stroke corner cap and a thick protective cover.



STS304 for premium sinks

It uses the finest stainless steel and has excellent corrosion resistance. The surface is treated with a hairline to provide

elegant beauty.



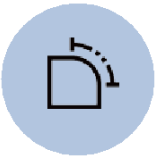
Product Name		AT830
Size	Outer	830 x 450 x 227 (mm)
	Inner	780 x 400 (mm)
Corner Radius		10 R
Drain Size		162 Ø
Installation Type		Under Mount
Thickness	Plate	1.15 T
	Sink	1.15 T
Finish		Hair Line
Accessories		Wire Basket, Cutting Board, Colander, Rolling Rack, Large drain, Cover for large drain

SU780 Commercial Series



Handmade for the Best quality

Modern and luxurious Atisan Kitchen sink are handmade over 80% using cutting-edge technology. It also handles only the best products with a thorough quality inspection system.



10R for cleanliness

All corners are handled smoothly with 10R, making it convenient to clean and manage.



Engineeringly designed drainage system

It is designed at the optimal floorangle so that the tableware inside the sink does not fall. It is also designed to facilitate drainage by placing a gentle slope and drainage line on the floor to prevent water from accumulating.



Minimize noise for a quiet kitchen

A pad that blocks vibration, and soundproof pads absorb noise and vibration from all sides. In addition, the double pad prevents condensation from occurring.



Special packaging lowers the risk of damage

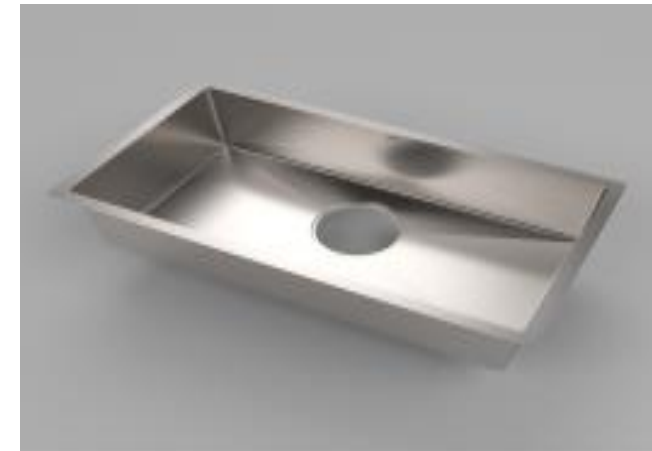
Double wrapping the product with sink floor protective materials and vinyl and black cloth, minimizing the risk of damage that may occur during delivery with a stroke corner cap and a thick protective cover.



STS304 for premium sinks

It uses the finest stainless steel and has excellent corrosion resistance. The surface is treated with a hairline to provide

elegant beauty.



Product Name		SU780
Size	Outer	830 x 450 x 227 (mm)
	Inner	780 x 400 (mm)
Corner Radius		10 R
Drain Size		162 Ø
Installation Type		Under Mount
Thickness	Plate	1.15 T
	Sink	1.15 T
Finish		Hair Line
Accessories		Wire Basket, Cutting Board, Colander, Rolling Rack, Large drain, Cover for large drain

AT830 Nano Commercial Series



Various colors of mineral coating

It is resistant to scratches and further enhances contamination resistance by applying an inorganic coating on the sink surface. You can choose the coating color according to your personal taste, creating an elegant and neat kitchen.



10R for cleanliness

All corners are handled smoothly with 10R, making it convenient to clean and manage.



Engineeringly designed drainage system

It is designed at the optimal floorangle so that the tableware inside the sink does not fall. It is also designed to facilitate drainage by placing a gentle slope and drainage line on the floor to prevent water from accumulating.



Minimize noise for a quiet kitchen

A pad that blocks vibration, and soundproof pads absorb noise and vibration from all sides. In addition, the double pad prevents condensation from occurring.



Special packaging lowers the risk of damage

Double wrapping the product with sink floor protective materials and vinyl and black cloth, minimizing the risk of damage that may occur during delivery with a stroke corner cap and a thick protective cover.



STS304 for premium sinks

It uses the finest stainless steel and has excellent corrosion resistance. The surface is treated with a hairline to provide

elegant beauty.



Product Name		AT830 Nano
Size	Outer	830 x 450 x 227 (mm)
	Inner	780 x 400 (mm)
Corner Radius		10 R
Drain Size		162 Ø
Installation Type		Under Mount
Thickness	Plate	2 T
	Sink	0.96 T
Finish		Hair Line
Accessories		Wire Basket, Cutting Board, Colander, Rolling Rack, Large drain, Cover for large drain

DU564 Dual Series



Dual Mount, which is recognized as a design patent

Innovative design allows under/top mount installation in all kitchens. The 3.5mm thick steel sheet is elaborately cut at a 33-degree angle to enhance aesthetics and practicality.



10R for cleanliness

All corners are handled smoothly with 10R, making it convenient to clean and manage.



Engineeringly designed drainage system

It is designed at the optimal floorangle so that the tableware inside the sink does not fall. It is also designed to facilitate drainage by placing a gentle slope and drainage line on the floor to prevent water from accumulating.



Minimize noise for a quiet kitchen

A pad that blocks vibration, and soundproof pads absorb noise and vibration from all sides. In addition, the double pad prevents condensation from occurring.



Special packaging lowers the risk of damage

Double wrapping the product with sink floor protective materials and vinyl and black cloth, minimizing the risk of damage that may occur during delivery with a stroke corner cap and a thick protective cover.



STS
304

STS304 for premium sinks

It uses the finest stainless steel and has excellent corrosion resistance. The surface is treated with a hairline to provide elegant beauty.



Product Name		DU564
Size	Outer	564 x 497 x 227 (mm)
	Inner	500 x 370 (mm)
Corner Radius		10 R
Drain Size		89 Ø
Installation Type		Dual Mount
Thickness	Plate	3.5 T
	Sink	1.05 T
Finish		Hair Line
Accessories		Cover for small drain, Small drain, Colander

DU757 Dual Series



Dual Mount, which is recognized as a design patent

Innovative design allows under/top mount installation in all kitchens. The 3.5mm thick steel sheet is elaborately cut at a 33-degree angle to enhance aesthetics and practicality.



10R for cleanliness

All corners are handled smoothly with 10R, making it convenient to clean and manage.



Engineeringly designed drainage system

It is designed at the optimal floorangle so that the tableware inside the sink does not fall. It is also designed to facilitate drainage by placing a gentle slope and drainage line on the floor to prevent water from accumulating.



Minimize noise for a quiet kitchen

A pad that blocks vibration, and soundproof pads absorb noise and vibration from all sides. In addition, the double pad prevents condensation from occurring.



Special packaging lowers the risk of damage

Double wrapping the product with sink floor protective materials and vinyl and black cloth, minimizing the risk of damage that may occur during delivery with a stroke corner cap and a thick protective cover.



STS304 for premium sinks

It uses the finest stainless steel and has excellent corrosion resistance. The surface is treated with a hairline to provide elegant beauty.



Product Name		DU757
Size	Outer	757 x 517 x 227 (mm)
	Inner	696 x 400 (mm)
Corner Radius		10 R
Drain Size		162 Ø
Installation Type		Dual Mount
Thickness	Plate	3.5 T
	Sink	1.05 T
Finish		Hair Line
Accessories		Wire Basket, Cutting Board, Colander, Rolling Rack, Large drain, Cover for large drain

DU838 Dual Series



Dual Mount, which is recognized as a design patent

Innovative design allows under/top mount installation in all kitchens. The 3.5mm thick steel sheet is elaborately cut at a 33-degree angle to enhance aesthetics and practicality.



10R for cleanliness

All corners are handled smoothly with 10R, making it convenient to clean and manage.



Engineeringly designed drainage system

It is designed at the optimal floor angle so that the tableware inside the sink does not fall. It is also designed to facilitate drainage by placing a gentle slope and drainage line on the floor to prevent water from accumulating.



Minimize noise for a quiet kitchen

A pad that blocks vibration, and soundproof pads absorb noise and vibration from all sides. In addition, the double pad prevents condensation from occurring.



Special packaging lowers the risk of damage

Double wrapping the product with sink floor protective materials and vinyl and black cloth, minimizing the risk of damage that may occur during delivery with a stroke corner cap and a thick protective cover.



STS304 for premium sinks

It uses the finest stainless steel and has excellent corrosion resistance. The surface is treated with a hairline to provide elegant beauty.



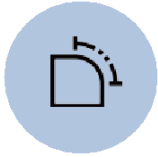
Product Name		DU838
Size	Outer	838 x 527 x 227 (mm)
	Inner	774 x 400 (mm)
Corner Radius		10 R
Drain Size		162 Ø
Installation Type		Dual Mount
Thickness	Plate	3.5 T
	Sink	1.05 T
Finish		Hair Line
Accessories		Wire Basket, Cutting Board, Colander, Rolling Rack, Large drain, Cover for large drain

DU982 Dual Series



Dual Mount, which is recognized as a design patent

Innovative design allows under/top mount installation in all kitchens. The 3.5mm thick steel sheet is elaborately cut at a 33-degree angle to enhance aesthetics and practicality.



10R for cleanliness

All corners are handled smoothly with 10R, making it convenient to clean and manage.



Engineeringly designed drainage system

It is designed at the optimal floorangle so that the tableware inside the sink does not fall. It is also designed to facilitate drainage by placing a gentle slope and drainage line on the floor to prevent water from accumulating.



Minimize noise for a quiet kitchen

A pad that blocks vibration, and soundproof pads absorb noise and vibration from all sides. In addition, the double pad prevents condensation from occurring.



Special packaging lowers the risk of damage

Double wrapping the product with sink floor protective materials and vinyl and black cloth, minimizing the risk of damage that may occur during delivery with a stroke corner cap and a thick protective cover.



STS
304

STS304 for premium sinks

It uses the finest stainless steel and has excellent corrosion resistance. The surface is treated with a hairline to provide elegant beauty.



Product Name		DU982
Size	Outer	982 x 527 x 227 (mm)
	Inner	918 x 400 (mm)
Corner Radius		10 R
Drain Size		162 Ø
Installation Type		Dual Mount
Thickness	Plate	3.5 T
	Sink	1.05 T
Finish		Hair Line
Accessories		Wire Basket, Cutting Board, Colander, Rolling Rack, Large drain, Cover for large drain

PDU838 Pocket Series



Another space inside the kitchen sink, Pocket

Pockets in the kitchen sink have been placed to maximize practicality. The scrubbers and detergent containers on the kitchen sink are placed inside the sink to create a clean kitchen space.



10R for cleanliness

All corners are handled smoothly with 10R, making it convenient to clean and manage.



Engineeringly designed drainage system

It is designed at the optimal floor angle so that the tableware inside the sink does not fall. It is also designed to facilitate drainage by placing a gentle slope and drainage line on the floor to prevent water from accumulating.



Minimize noise for a quiet kitchen

A pad that blocks vibration, and soundproof pads absorb noise and vibration from all sides. In addition, the double pad prevents condensation from occurring.



Special packaging lowers the risk of damage

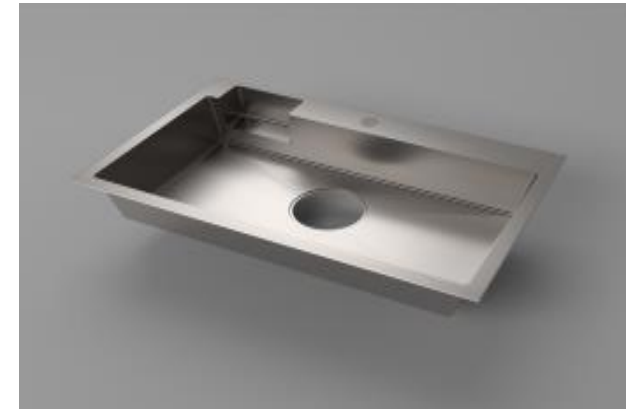
Double wrapping the product with sink floor protective materials and vinyl and black cloth, minimizing the risk of damage that may occur during delivery with a stroke corner cap and a thick protective cover.



STS304 for premium sinks

It uses the finest stainless steel and has excellent corrosion resistance. The surface is treated with a hairline to provide

elegant beauty.



Product Name		PDU838
Size	Outer	838 x 527 x 227 (mm)
	Inner	775 x 400 (mm)
Corner Radius		10 R
Drain Size		162 Ø
Installation Type		Dual Mount
Thickness	Plate	3.5 T
	Sink	1.05 T
Finish		Hair Line
Accessories		Wire Basket, Cutting Board, Colander, Rolling Rack, Large drain, Cover for large drain

LU780 Layered Series



Layered for a clean space

There is a stage inside the kitchen sink, so the upper part of the corner is treated at a right angle and the lower part is treated at 10R. This space is not just divided into layers, but strengthened aesthetics and practicality through the beach of accessories in the kitchen sink.



10R for cleanliness

All corners are handled smoothly with 10R, making it convenient to clean and manage.



Engineeringly designed drainage system

It is designed at the optimal floor angle so that the tableware inside the sink does not fall. It is also designed to facilitate drainage by placing a gentle slope and drainage line on the floor to prevent water from accumulating.



Minimize noise for a quiet kitchen

A pad that blocks vibration, and soundproof pads absorb noise and vibration from all sides. In addition, the double pad prevents condensation from occurring.



Special packaging lowers the risk of damage

Double wrapping the product with sink floor protective materials and vinyl and black cloth, minimizing the risk of damage that may occur during delivery with a stroke corner cap and a thick protective cover.



STS304 for premium sinks

It uses the finest stainless steel and has excellent corrosion resistance. The surface is treated with a hairline to provide

elegant beauty.



Product Name		LU780
Size	Outer	830 x 450 x 227 (mm)
	Inner	780 x 400 (mm)
Corner Radius		10 R
Drain Size		162 Ø
Installation Type		Under Mount
Thickness	Plate	2 T
	Sink	1.05 T
Finish		Hair Line
Accessories		Small Wire Basket, Wire Basket, Cutting Board, Colander, Rolling Rack, Large drain, Cover for large drain

LT780 Layered Series



Layered for a clean space

There is a stage inside the kitchen sink, so the upper part of the corner is treated at a right angle and the lower part is treated at 10R. This space is not just divided into layers, but strengthened aesthetics and practicality through the beach of accessories in the kitchen sink.



10R for cleanliness

All corners are handled smoothly with 10R, making it convenient to clean and manage.



Engineeringly designed drainage system

It is designed at the optimal floorangle so that the tableware inside the sink does not fall. It is also designed to facilitate drainage by placing a gentle slope and drainage line on the floor to prevent water from accumulating.



Minimize noise for a quiet kitchen

A pad that blocks vibration, and soundproof pads absorb noise and vibration from all sides. In addition, the double pad prevents condensation from occurring.



Special packaging lowers the risk of damage

Double wrapping the product with sink floor protective materials and vinyl and black cloth, minimizing the risk of damage that may occur during delivery with a stroke corner cap and a thick protective cover.



STS304 for premium sinks

It uses the finest stainless steel and has excellent corrosion resistance. The surface is treated with a hairline to provide

elegant beauty.



Product Name		LT780
Size	Outer	841 x 525 x 227 (mm)
	Inner	780 x 400 (mm)
Corner Radius		10 R
Drain Size		162 Ø
Installation Type		Dual Mount
Thickness	Plate	3.5 T
	Sink	1.05 T
Finish		Hair Line
Accessories		Small Wire Basket, Wire Basket, Cutting Board, Colander, Rolling Rack, Large drain, Cover for large drain

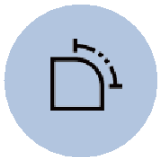
LK500

Linking Series



Layered for a clean space

There is a stage inside the kitchen sink, so the upper part of the corner is treated at a right angle and the lower part is treated at 10R. This space is not just divided into layers, but strengthened aesthetically and practicality through the beach of accessories in the kitchen sink.



10R for cleanliness

All corners are handled smoothly with 10R, making it convenient to clean and manage.



Engineeringly designed drainage system

It is designed at the optimal floor angle so that the tableware inside the sink does not fall. It is also designed to facilitate drainage by placing a gentle slope and drainage line on the floor to prevent water from accumulating.



Minimize noise for a quiet kitchen

A pad that blocks vibration, and soundproof pads absorb noise and vibration from all sides. In addition, the double pad prevents condensation from occurring.



Special packaging lowers the risk of damage

Double wrapping the product with sink floor protective materials and vinyl and black cloth, minimizing the risk of damage that may occur during delivery with a stroke corner cap and a thick protective cover.



STS304 for premium sinks

It uses the finest stainless steel and has excellent corrosion resistance. The surface is treated with a hairline to provide

elegant beauty.



Product Name		LK500
Size	Outer	512 x 412 x 39 (mm)
	Inner	500 x 400 (mm)
Corner Radius		10 R
Drain Size		89 Ø
Installation Type		Linking
Thickness	Plate	1.15 T
	Sink	1.15 T
Finish		Hair Line
Accessories		Cover for small drain, Small drain, Colander

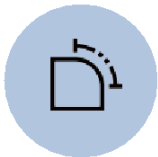
LK780

Linking Series



Layered for a clean space

There is a stage inside the kitchen sink, so the upper part of the corner is treated at a right angle and the lower part is treated at 10R. This space is not just divided into layers, but strengthened aesthetically and practicality through the beach of accessories in the kitchen sink.



10R for cleanliness

All corners are handled smoothly with 10R, making it convenient to clean and manage.



Engineeringly designed drainage system

It is designed at the optimal floorangle so that the tableware inside the sink does not fall. It is also designed to facilitate drainage by placing a gentle slope and drainage line on the floor to prevent water from accumulating.



Minimize noise for a quiet kitchen

A pad that blocks vibration, and soundproof pads absorb noise and vibration from all sides. In addition, the double pad prevents condensation from occurring.



Special packaging lowers the risk of damage

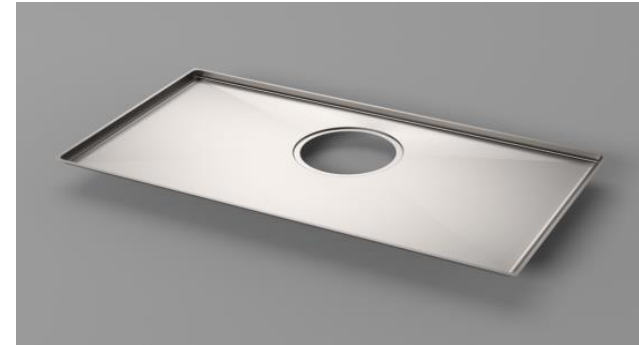
Double wrapping the product with sink floor protective materials and vinyl and black cloth, minimizing the risk of damage that may occur during delivery with a stroke corner cap and a thick protective cover.



STS304 for premium sinks

It uses the finest stainless steel and has excellent corrosion resistance. The surface is treated with a hairline to provide

elegant beauty.



Product Name		LK780
Size	Outer	792 x 412 x 39 (mm)
	Inner	780 x 400 (mm)
Corner Radius		10 R
Drain Size		162 Ø
Installation Type		Lingking
Thickness	Plate	1.15 T
	Sink	1.15 T
Finish		Hair Line
Accessories		Wire Basket, Cutting Board, Colander, Rolling Rack, Large drain, Cover for large drain



Product Name	Cover for Small drain
Size	115.4Ø
Material	Stainless
Applicable	AT350, EV457, SU500, AT650, DU564, LK500,
Product	DU858SL, DU858SR

Product Name	Small drain
Size	114.5Ø x 172
Material	PP, Stainless
Applicable	AT350, EV457, SU500, AT650, DU564, LK500,
Product	DU858SL, DU858SR



Product Name	Cover for large drain
Size	181.6Ø
Material	Stainless
Applicable Product	AT830, SU780, DU757, DU838, DU858, DU982, PDU838, LK780 LU780, LT780

Product Name	Large drain
Size	185Ø x 154
Material	PP, Stainless
Applicable Product	AT830, SU780, DU757, DU838, DU858, DU982, PDU838, LK780 LU780, LT780

Product Name	Rolling rack
Size	349 x 428 x 8
Material	Stainless
Applicable Product	All Product



Product Name	Wire Basket
Size	263 x 442 x 191
Material	Stainless
Applicable Product	AT830, SU780, DU757, DU838, DU858, DU982, PDU838, LK780

Product Name	Cutting Board
Size	244 x 380 x 25
Material	Bamboo
Applicable Product	AT830, SU780, DU757, DU838, DU858, DU982, PDU838, LK780

Product Name	Colander
Size	134 x 460 x 70
Material	Stainless
Applicable Product	All Product (Excluding AT350, EV457, LU780, LT780)



Product Name	Cover for large drain
Size	181.6Ø
Material	Stainless
Applicable Product	AT830, SU780, DU757, DU838, DU858, DU982, PDU838, LK780 LU780, LT780



Product Name	Large drain
Size	185Ø x 154
Material	PP, Stainless
Applicable Product	AT830, SU780, DU757, DU838, DU858, DU982, PDU838, LK780 LU780, LT780



Product Name	Rolling Rack
Size	349 x 428 x 8
Material	Stainless
Applicable Product	All Product



Product Name	Small Wire Basket
Size	130 x 393 x 100
Material	Stainless
Applicable Product	LU780, LT780



Product Name	Wire Basket
Size	265 x 393 x 185
Material	Stainless
Applicable Product	LU780, LT780



Product Name	Cutting Board
Size	250 x 396 x 25
Material	Walnut
Applicable Product	LU780, LT780